

Dermaheal shampoo & hair solution

Together, these two **REVOLUTIONARY NEW Growth Factor hair products** work to:

- Increase follicle size and stop hair from falling out by reducing DHT
- Help form new blood vessels, stimulate follicles to produce stronger, healthier hair
- Increase synthesis of Collagen & Elastin, increase blood flow, restrain hair depigmentation
- Increase stem cell release from bulge into matrix of hair follicle
- Play important role in the control of perifollicular vascularization during hair cycling

Active Ingredients:

Dermaheal Shampoo:

Copper Peptide

Dermaheal Hair Solution Spray

Insulin-like Growth Factor (IGF-1), basic Fibroblast Growth Factor (bFGF), Vascular Endothelial Growth Factor (VEGF)

Directions: Use daily for two weeks. Shampoo, dry hair, part in several areas and apply hair solution (Growth Factors). Massage into hair. Style as usual. After two weeks, use each time you shampoo.

Hair Solution
Stock#: 17875

Combo:
Stock#: 17877

Shampoo
Stock#: 17873

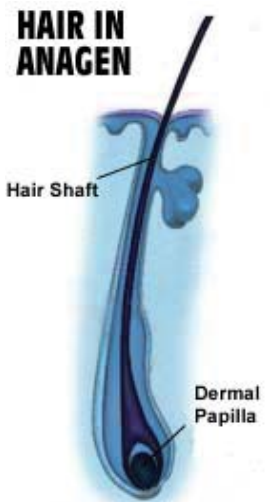


Exclusively Distributed By

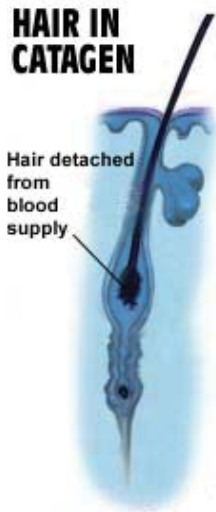
ApothéCure, Inc
Creative Custom Compound

Growth (Anagen) Phase

Approximately 85% of all hairs are in the growing phase at any one time. The Anagen phase, or growth phase, can vary from two to six years. Hair grows approximately 10cm per year and any individual hair is unlikely to grow more than one meter long.



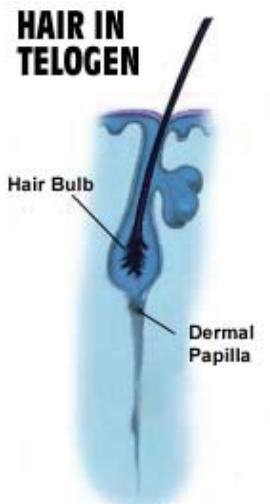
Catagen Phase



At the end of the Anagen phase, the hair enters into a Catagen phase which lasts about one or two weeks. During the Catagen phase, the hair follicle shrinks to about 1/6th of the normal length. The lower part is destroyed and the dermal papilla breaks away to rest (see Telogen phase below).

Telogen Phase

The resting phase follows the Catagen phase and normally lasts about 5-6 weeks. During this time, the hair does not grow but stays attached to the follicle while the dermal papilla stays in a resting phase. Approximately 10-15% of all hairs are in this phase at any one time. Therefore, the length of time that the hair is able to spend growing during the growth phase controls the maximum length of the hair.



At the end of the Telogen phase, the hair follicle re-enters the Anagen phase. The dermal papilla and the base of the follicle join together again and the new hair begins to form. If the old hair has not already been shed, the new hair pushes the old one out, and the growth cycle starts all over again.

Although the precise mechanism regulating molecules expressed in epithelial (matrix) cells under the influence of mesenchymal (papilla) cells may have a crucial role in the terminal differentiation of follicular matrix cells, recently particular families of Growth Factors have been reported to be involved in the regulation of hair morphogenesis and cyclic hair growth. They are polypeptides or proteins produced by the cells and function as cell growth regulatory molecules. For their hydrophylic properties, Growth Factors mediate their signals by binding to their specific receptors located on the cell surface. Hair follicle growth has been found to be inhibited by EGF and TGF-beta while such growth was simulated by the administration of paracrine Growth Factors such as KGF (FGF-7), IGF-1 and HGF.

To order, call: 800-969-6601 or 972-960-6601
www.apothecure.com